

- LEGEND
- A

LINEAR LED LUMINAIRE.

B

BULKHEAD LED UTILITY LUMINAIRE. WALL OR CEILING MOUNTED

EM

EMERGENCY LED SPOT

EL

EXTERNAL EXIT EMERGENCY BULKHEAD IP66 MAINTAINED LUMINAIRE.

D

EMERGENCY DIRECTIONAL EXIT LUMINAIRE c/w APPROPRIATE RUNNING MAN LEGEND. 'D' DENOTES DOUBLE SIDED

P

PIR PRESENCE SENSOR SWITCH, PROGRAMMABLE & INITIALLY SET TO 30MIN AT SPECIFIED LEVEL.

OR

20A LOCAL LIGHTING SWITCH : "OR" DENOTES OVERRIDE SWITCH

FAP

NEW FIRE ALARM PANEL
EMERGENCY LIGHTING TEST KEY SWITCH - MULTI-GANG

SD

MANUAL CALL POINT

SD

SMOKE DETECTOR

SD S

COMBINED SMOKE DETECTOR / SOUNDER

SD S

COMBINED SMOKE DETECTOR / SOUNDER / STROBE

HD

HEAT DETECTOR

HD S

COMBINED HEAT DETECTOR / SOUNDER

HD S

COMBINED HEAT DETECTOR / SOUNDER / STROBE

S

CEILING MOUNTED SOUNDER / STROBE

S

WALL MOUNTED SOUNDER / STROBE - IP66 WEATHERPROOF RATED WHERE MOUNTED EXTERNALLY.

SD

VOID MOUNTED DETECTOR.

IF

INTERFACE UNIT

EXIT LOCATION / DIRECTION

EMERGENCY EXIT DISTANCE

FD30S FIRE DOOR

FD60S FIRE DOOR WITH SMOKE SEAL

FD30 FIRE DOOR

FD60 FIRE DOOR

LICENSING OUTLINE

PROTECTED STAIR LOBBY & LIFT

WATER FIRE EXTINGUISHER

FIRE BLANKET IN CONTAINER

CARBON DIOXIDE FIRE EXTINGUISHER
- The diagram is a detailed ground floor plan of a building, likely a club or public space, showing the layout of rooms, corridors, and exits. The plan is overlaid with a grid system with letters A through K horizontally and numbers 1 through 7 vertically. Key features include:
 - Rooms and Areas:** Club Members' Space (130.34m² / 1402.96ft²), Kitchen (14.19m² / 152.73ft²), Main Bar (8.94m² / 96.76ft²), and a Protected Stair Lobby & Lift.
 - Exits:** Four main exits are marked with red arrows and labels: FINAL EXIT 1, FINAL EXIT 2, FINAL EXIT 3, and FINAL EXIT 4 (Fire Fighting Access Only). A main entrance/exit is also indicated.
 - Fire Safety Equipment:** Numerous smoke detectors (SD), heat detectors (HD), and combined units (SDS, HDS) are shown. There are also fire extinguishers (water and carbon dioxide) and fire blankets.
 - Lighting and Controls:** Various types of luminaires (A, B, EM, EL, D) and switches (P, OR) are indicated throughout the plan.
 - Other Features:** A dry riser, fire doors (FD30, FD60), and emergency exit distances are marked. A red line outlines a specific area, possibly related to licensing.
- 1

Escape Plan - Ground Floor

Scale: 1:100
- This drawing and all information held herein is produced solely for the benefit and use of Portview Fit-Out Limited. Any other party in possession of this drawing must carry out their own site surveys and coordination to confirm the validity of any information contained herein.
- At no time must outside parties use the content of this drawing to coordinate their own works, or those of others under their supervision. Portview Fit-Out Limited will not be held responsible for any errors or omissions contained herein if this drawing is used in any way by any third party unless specifically agreed to by its author in writing. No dimensions to be scaled from this drawing. If in doubt - ask.
- This drawing is the property of Portview Fit-out Limited. Copyright is reserved by them and the drawing is issued on the condition that it is not copied, reproduced, retained or disclosed to any unauthorised person, either wholly or in part, without the consent in writing of Portview Fit-out Limited.
- | Signed: | D.M. | Internal
Quality Check | | | |
|--|---------|--|---------|--|--|
| Date: | 23.2.21 | | | | |
| Revision | Date | Description | | | |
| A | D.M. | 23.2.21 FOR INFORMATION | | | |
| | | | | | |
| Job Number: R878 | | | | | |
| Job Name: 50 Station Road | | | | | |
| Architect: Hawkins\Brown | | | | | |
| Drawing Title: Ground Floor Licensing Plan | | | | | |
| Drawn By: D.M. | | Date: | 23.2.21 | | |
| Scale: 1:100 @ A1 | | Revision: | A | | |
| Drawing Number: R878-00-900 | | | | | |
| DRAWING ISSUED: | | STATUS | | | |
| FOR INFORMATION | | A B C - | | | |
| Portview Fit-Out Limited
46 Florenceville Avenue,
Belfast, Northern Ireland
BT7 3GZ | | phone +44 (0)28 9064 4765
fax +44 (0)28 90641330
email info@portview.co.uk
portview.co.uk | | | |

This drawing and all information held herein is produced solely for the benefit and use of Portview Fit-Out Limited. Any other party in possession of this drawing must carry out their own site surveys and coordination to confirm the validity of any information contained herein.

At no time must outside parties use the content of this drawing to coordinate their own works, or those of others under their supervision. Portview Fit-Out Limited will not be held responsible for any errors or omissions contained herein if this drawing is used in any way by any third party unless specifically agreed to by its author in writing. No dimensions to be scaled from this drawing. If in doubt - ask.

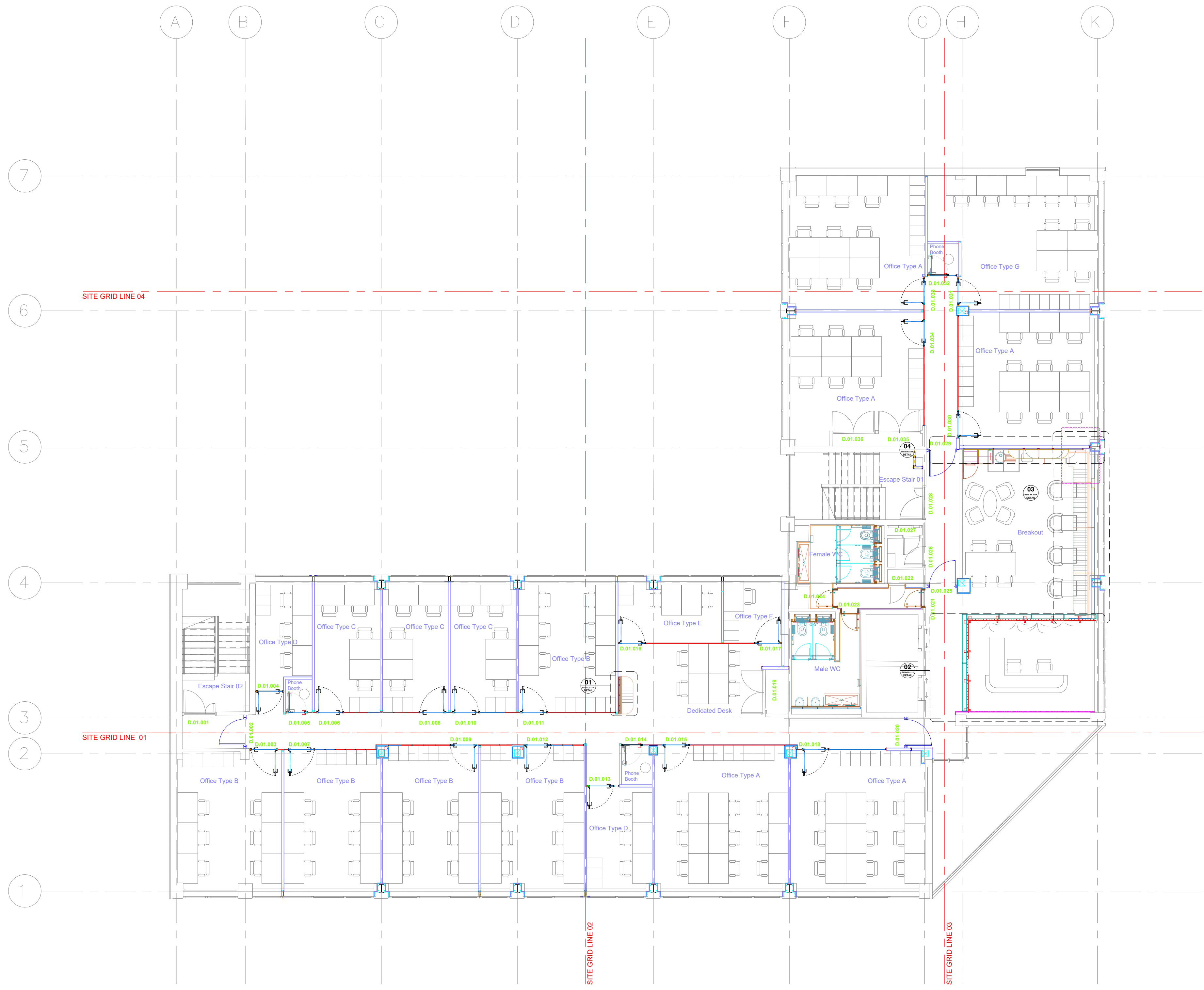
This drawing is the property of Portview Fit-out Limited. Copyright is reserved by them and the drawing is issued on the condition that it is not copied, reproduced, retained or disclosed to any unauthorised person, either wholly or in part, without the consent in writing of Portview Fit-out Limited.

Signed:	DMcC	Internal Quality Check
Date:	30.10.20	

Revision	Date	Description
A	MS	30.10.20
		FIRST ISSUE

Job Number:	R878		
Job Name:	50 Station Road		
Architect:	Hawkins\Brown		
Drawing Title:	First Floor - GA		
Drawn By:	MS	Date:	30.10.20
Scale:	1:100 @ A1	Revision:	A
Drawing Number:	R878-01-0101		

DRAWING ISSUED:	STATUS
FOR CONSTRUCTION	A B C -



1 GA - First Floor
Scale: 1:100

Notes:
All doors fitted with hold open devices will have 15mm white intumescent strip to the leading edge which will provide 15point requirement contrast to door facings in line with BS 8300:2008 - Annex B

Portview will liaise with Wayfinding Signage Consultant on incorporating room numbers when the system has been confirmed.

This drawing and all information held herein is produced solely for the benefit and use of Portview Fit-Out Limited. Any other party in possession of this drawing must carry out their own site surveys and coordination to confirm the validity of any information contained herein.

At no time must outside parties use the content of this drawing to coordinate their own works, or those of others under their supervision. Portview Fit-Out Limited will not be held responsible for any errors or omissions contained herein if this drawing is used in any way by any third party unless specifically agreed to by its author in writing. No dimensions to be scaled from this drawing. If in doubt - ask.

This drawing is the property of Portview Fit-out Limited. Copyright is reserved by them and the drawing is issued on the condition that it is not copied, reproduced, retained or disclosed to any unauthorised person, either wholly or in part, without the consent in writing of Portview Fit-out Limited.

Signed:	DM	Internal Quality Check
Date:	04.11.20	

Revision		Date	Description
A	MS	30.10.20	FIRST ISSUE
B	DM	15.12.20	UPDATED TO REFLECT HB COMMENTS

Job Number: R878

Job Name: 50 Station Road

Architect: Hawkins\Brown

Drawing Title: Second Floor - GA

Drawn By: MS Date: 30.10.20

Scale: 1:100 @ A1 Revision: B

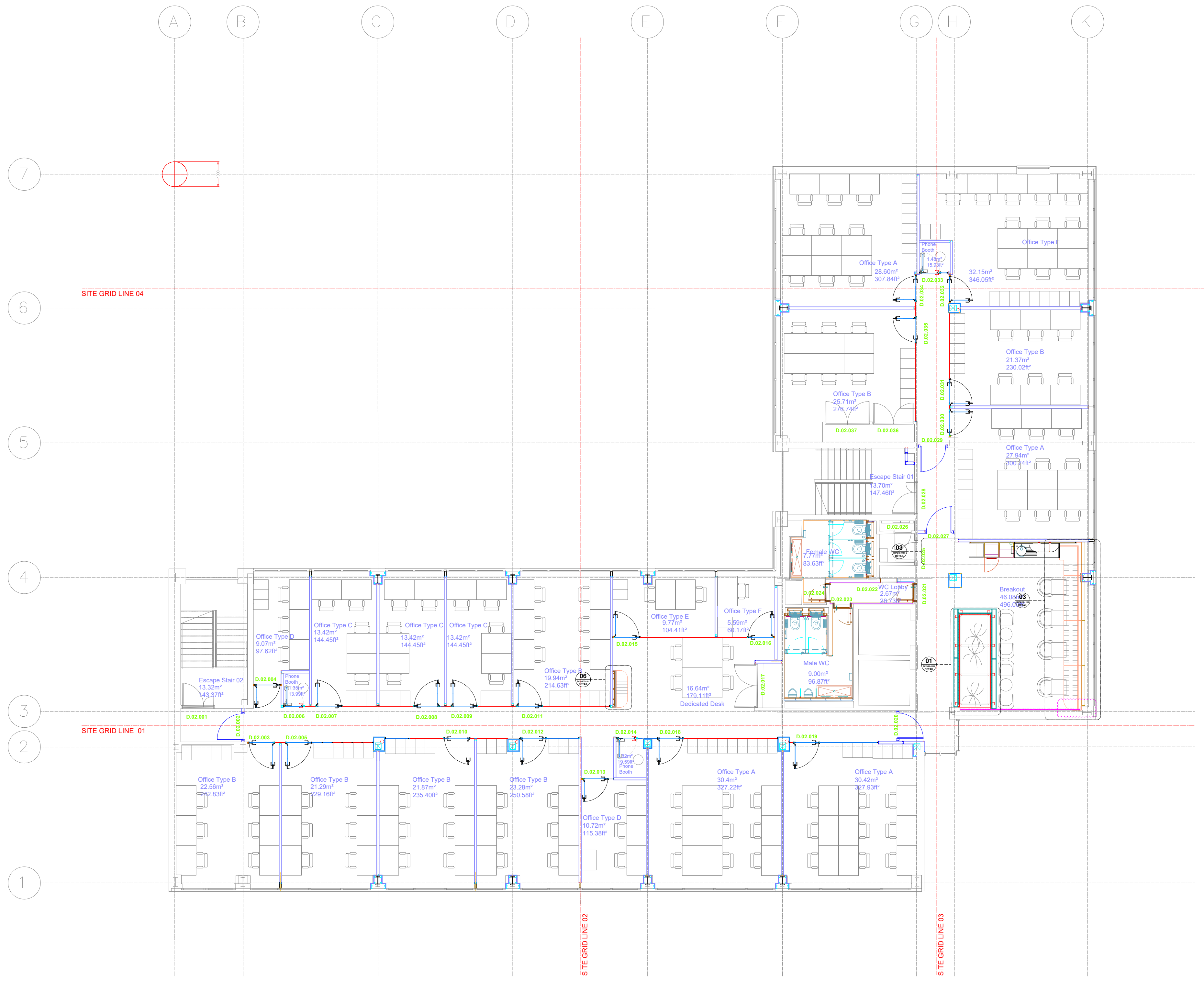
Drawing Number: R878-02-0101

DRAWING ISSUED: STATUS

FOR CONSTRUCTION A B C -

Portview Fit-Out Limited
46 Florenceville Avenue,
Belfast, Northern Ireland
BT7 3GZ

phone +44 (0)28 9064 4765
fax +44 (0)28 90641330
email info@portview.co.uk
portview.co.uk



1 GA - Second Floor
Scale: 1:100

Notes:
All doors fitted with hold open devices will have 15mm white intumescent strip to the leading edge which will provide 15point requirement contrast to door facings in line with BS 8300:2008 - Annex B

Portview will liaise with Wayfinding Signage Consultant on incorporating room numbers when the system has been confirmed.

This drawing and all information held herein is produced solely for the benefit and use of Portview Fit-Out Limited. Any other party in possession of this drawing must carry out their own site surveys and coordination to confirm the validity of any information contained herein.

At no time must outside parties use the content of this drawing to coordinate their own works, or those of others under their supervision. Portview Fit-Out Limited will not be held responsible for any errors or omissions contained herein if this drawing is used in any way by any third party unless specifically agreed to by its author in writing. No dimensions to be scaled from this drawing. If in doubt - ask.

This drawing is the property of Portview Fit-out Limited. Copyright is reserved by them and the drawing is issued on the condition that it is not copied, reproduced, retained or disclosed to any unauthorised person, either wholly or in part, without the consent in writing of Portview Fit-out Limited.

Signed:	DMcC	Internal Quality Check
Date:	04.11.20	

Revision		Date	Description
A	MS	30.10.20	FIRST ISSUE
B	DM	15.12.20	UPDATED TO REFLECT HB COMMENTS

Job Number: R878

Job Name: 50 Station Road

Architect: Hawkins\Brown

Drawing Title: Third Floor - GA

Drawn By: MS Date: 30.10.20

Scale: 1:100 @ A1 Revision: B

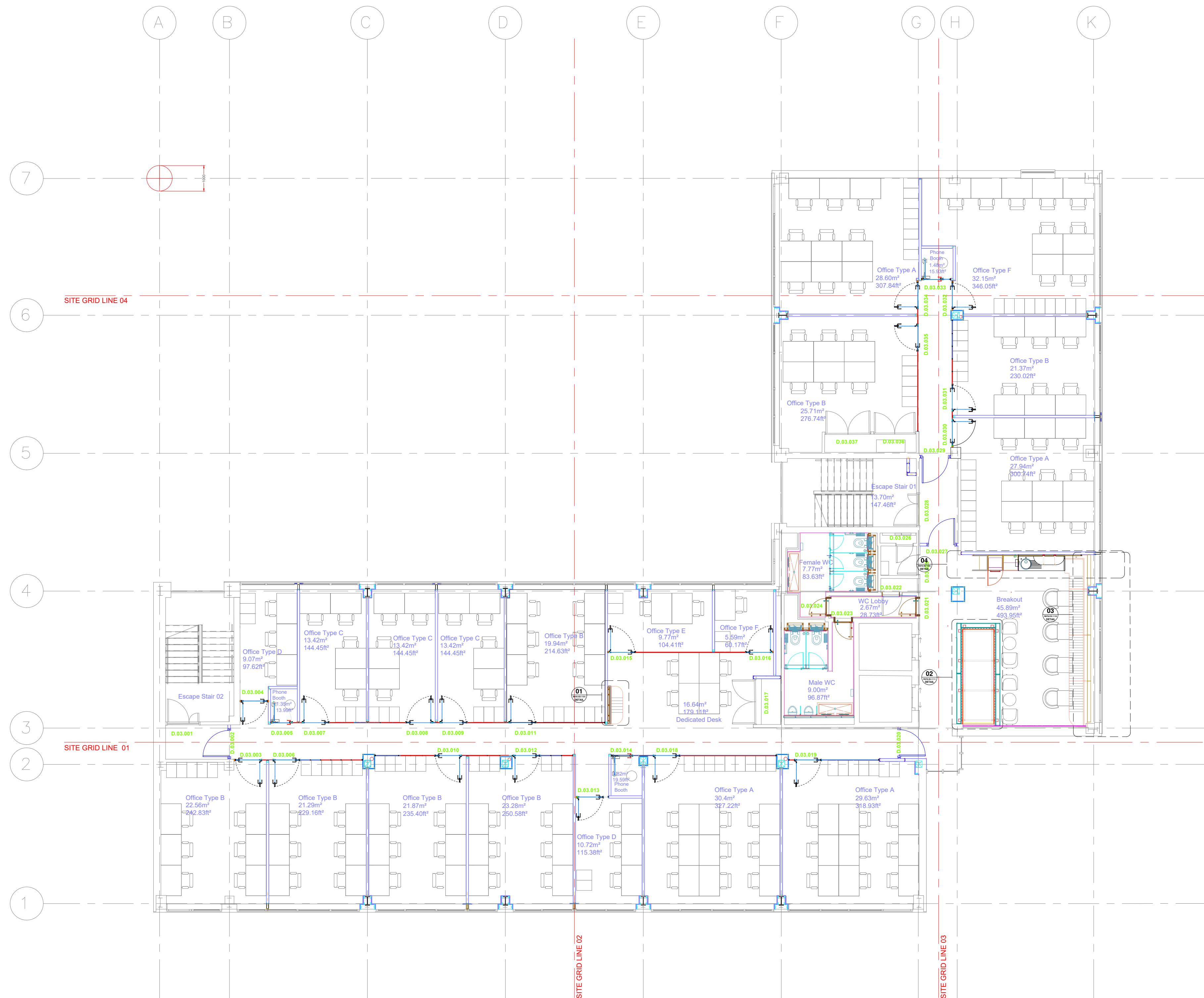
Drawing Number: R878-03-0101

DRAWING ISSUED: STATUS

FOR CONSTRUCTION A B C -

Portview Fit-Out Limited
46 Florenceville Avenue,
Belfast, Northern Ireland
BT7 3GZ

phone +44 (0)28 9064 4765
fax +44 (0)28 90641330
email info@portview.co.uk
portview.co.uk



1 GA- Third Floor
Scale: 1:100

Notes:
All doors fitted with hold open devices will have 15mm white intumescent strip to the leading edge which will provide 15point requirement contrast to door facings in line with BS 8300:2008 - Annex B

Portview will liaise with Wayfinding Signage Consultant on incorporating room numbers when the system has been confirmed.

This drawing and all information held herein is produced solely for the benefit and use of Portview Fit-Out Limited. Any other party in possession of this drawing must carry out their own site surveys and coordination to confirm the validity of any information contained herein.

At no time must outside parties use the content of this drawing to coordinate their own works, or those of others under their supervision. Portview Fit-Out Limited will not be held responsible for any errors or omissions contained herein if this drawing is used in any way by any third party unless specifically agreed to by its author in writing. No dimensions to be scaled from this drawing. If in doubt - ask.

This drawing is the property of Portview Fit-out Limited. Copyright is reserved by them and the drawing is issued on the condition that it is not copied, reproduced, retained or disclosed to any unauthorised person, either wholly or in part, without the consent in writing of Portview Fit-out Limited.

Signed:	DMcC	Internal Quality Check
Date:	04.11.20	

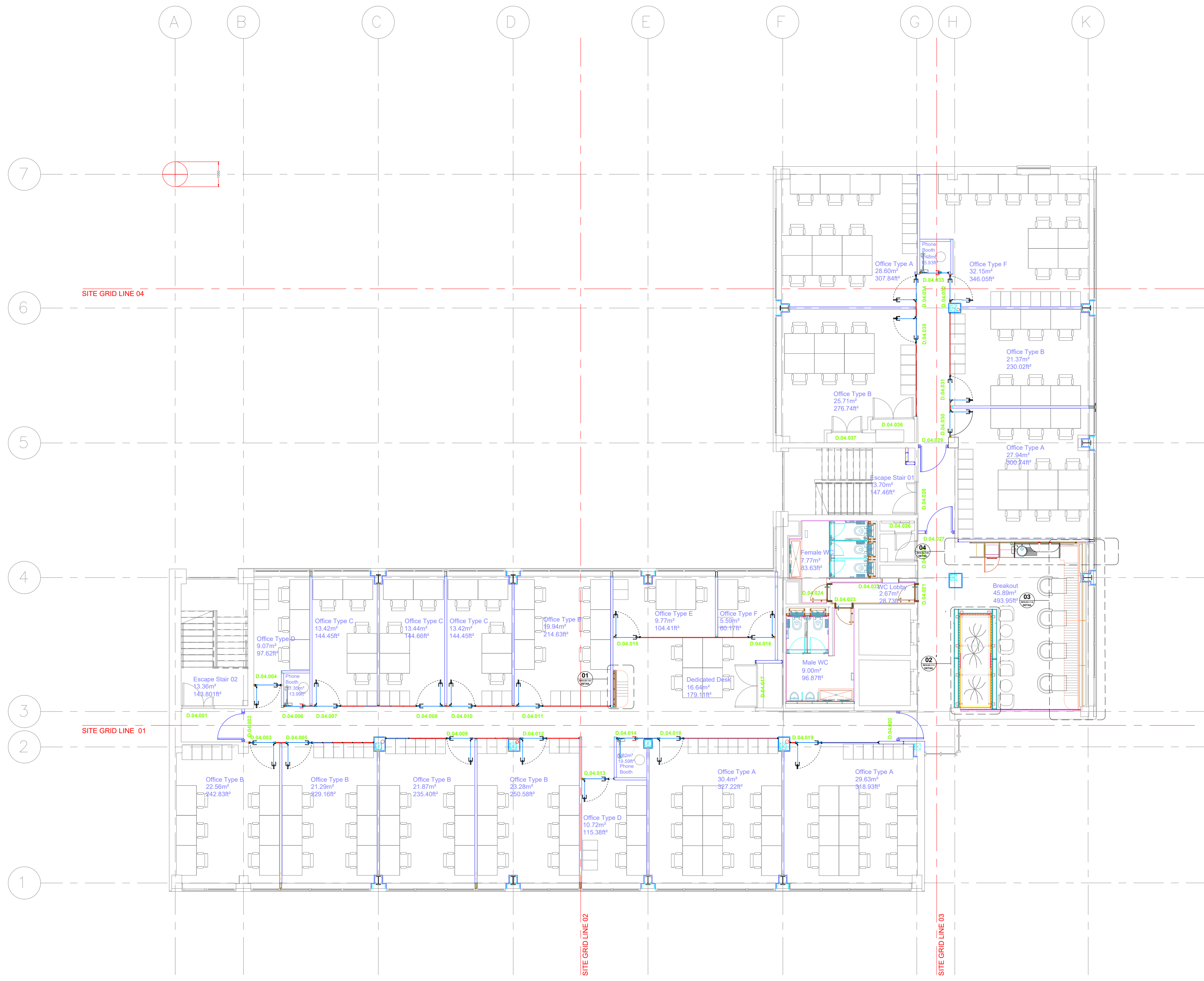
Revision		Date	Description
A	MS	30.10.20	FIRST ISSUE
B	DM	15.12.20	UPDATED TO REFLECT HB COMMENTS

Job Number:	R878		
Job Name:	50 Station Road		
Architect:	Hawkins\Brown		
Drawing Title:	Fourth Floor - GA		
Drawn By:	MS	Date:	30.10.20
Scale:	1:100 @ A1	Revision:	B
Drawing Number:	R878-04-0101		

DRAWING ISSUED:	STATUS
FOR CONSTRUCTION	A B C -

Portview Fit-Out Limited
46 Florenceville Avenue,
Belfast, Northern Ireland
BT7 3GZ

phone +44 (0)28 9064 4765
fax +44 (0)28 90641330
email info@portview.co.uk
portview.co.uk



1 GA - Fourth Floor
Scale: 1:100

Portview Fit-Out Limited
46 Florenceville Avenue,
Belfast, Northern Ireland
BT7 3GZ

phone +44 (0)28 9064 4765
fax +44 (0)28 90641330
email info@portview.co.uk
portview.co.uk

